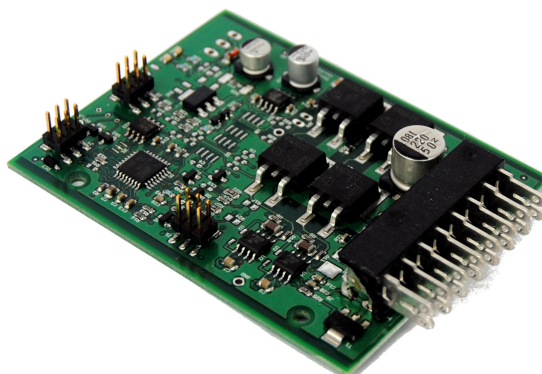




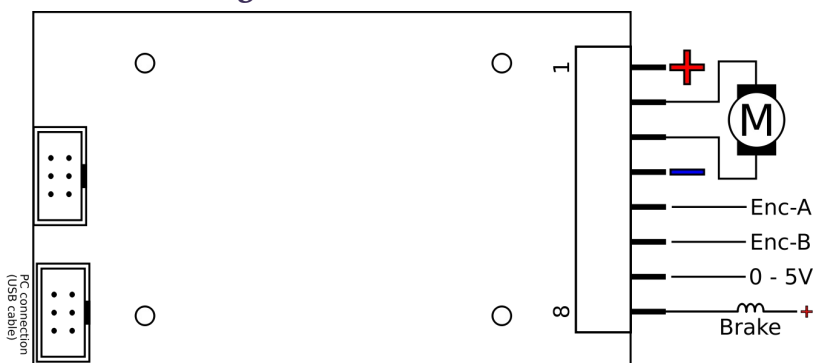
- Low standby current
- Position control
- Connection for motor brake
- Adjustable device parameters



Product Brief

Sepro TYP4 is a powerful motor control unit for usage in 12 and 24V systems. External inputs are available for connecting a 2 channel encoder used for position feedback. The analog input can be used for proportional control using a potentiometer or from external equipment such as PLC or similar.

Connection Diagram



Specifications

- Supply voltage 11 - 30 VDC (max 36 VDC)
- Output current max 30 ADC
- Current limit settings 1 – 20 ADC
- Efficiency > 94%
- Quiescent current 1 mA
- Ambient temperatur 0 - 70 deg. C
- Physical properties 30 x 65 x 84 mm, 40 gram
- PWM output frequency 500Hz - 28.8kHz
- Joystick potentiometer 5 – 20 kohm



SEPRO AB, Systratorpsvägen 4. 352 46 Växjö. Sweden
Phone: +46-470-777960, Fax: +46-470-777965
E-mail: info@seproab.se